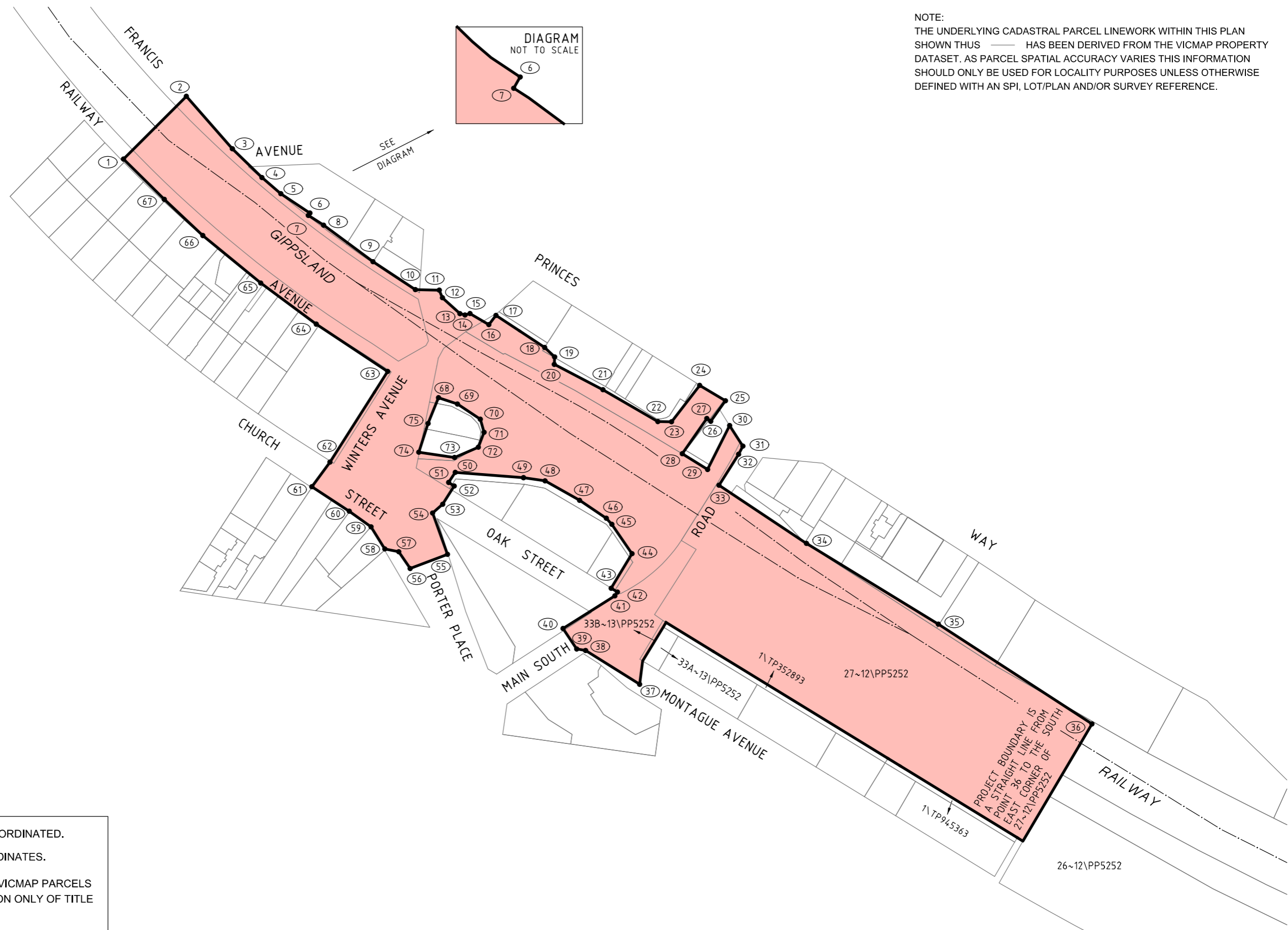



NOTE:  
 THE UNDERLYING CADASTRAL PARCEL LINEWORK WITHIN THIS PLAN SHOWN THUS ——— HAS BEEN DERIVED FROM THE VICMAP PROPERTY DATASET. AS PARCEL SPATIAL ACCURACY VARIES THIS INFORMATION SHOULD ONLY BE USED FOR LOCALITY PURPOSES UNLESS OTHERWISE DEFINED WITH AN SPI, LOT/PLAN AND/OR SURVEY REFERENCE.



POINTS SHOWN THUS ● (1) ARE COORDINATED.  
 SEE SHEET 2 FOR SCHEDULE OF COORDINATES.  
 LINES SHOWN THUS ——— ARE THE VICMAP PARCELS WHICH ARE THE APPROXIMATE LOCATION ONLY OF TITLE BOUNDARIES.

PLAN TO DESIGNATE THE PROJECT AREA PURSUANT TO SECTION 95(2) MAJOR TRANSPORT PROJECTS FACILITATION ACT 2009  
 Lodged in the Central Plan Office  
 Dated this 15th day of February 2021  
  
 CRAIG LESLIE SANDY  
 Surveyor-General

**LEGEND**

 PROJECT AREA

**DROUIN STATION  
 CAR PARK UPGRADE  
 PROJECT AREA**



**LEVEL CROSSING REMOVAL PROJECT**

25 12.5 0 25 50 75 100 SCALE  
 LENGTHS ARE IN METRES 1:2500

ORIGINAL SHEET SIZE: A3 SHEET 1 of 2 LEGL./20-212

**MGA2020 ZONE 55 CO-ORDINATES (METRES)**

COORDINATES ROUNDED TO THE NEAREST METRE. ADD 2 DECIMAL PLACES FOR FULL PRECISION

| Point | Easting | Northing |
|-------|---------|----------|
| 1     | 399456  | 5778599  |
| 2     | 399497  | 5778639  |
| 3     | 399527  | 5778605  |
| 4     | 399546  | 5778586  |
| 5     | 399558  | 5778576  |
| 6     | 399577  | 5778563  |
| 7     | 399576  | 5778562  |
| 8     | 399586  | 5778555  |
| 9     | 399618  | 5778532  |
| 10    | 399646  | 5778513  |
| 11    | 399662  | 5778513  |
| 12    | 399664  | 5778508  |
| 13    | 399675  | 5778498  |
| 14    | 399678  | 5778497  |
| 15    | 399682  | 5778498  |
| 16    | 399694  | 5778491  |
| 17    | 399699  | 5778497  |
| 18    | 399730  | 5778476  |
| 19    | 399737  | 5778470  |
| 20    | 399737  | 5778465  |
| 21    | 399768  | 5778448  |
| 22    | 399804  | 5778427  |
| 23    | 399813  | 5778427  |
| 24    | 399831  | 5778451  |
| 25    | 399848  | 5778441  |
| 26    | 399839  | 5778428  |
| 27    | 399836  | 5778429  |
| 28    | 399820  | 5778406  |
| 29    | 399837  | 5778396  |
| 30    | 399851  | 5778425  |
| 31    | 399860  | 5778411  |
| 32    | 399857  | 5778406  |
| 33    | 399844  | 5778386  |
| 34    | 399901  | 5778348  |
| 35    | 399987  | 5778295  |
| 36    | 400087  | 5778230  |
| 37    | 399792  | 5778256  |
| 38    | 399757  | 5778278  |
| 39    | 399751  | 5778279  |
| 40    | 399742  | 5778293  |

| Point | Easting | Northing |
|-------|---------|----------|
| 41    | 399776  | 5778314  |
| 42    | 399778  | 5778316  |
| 43    | 399774  | 5778319  |
| 44    | 399787  | 5778341  |
| 45    | 399774  | 5778360  |
| 46    | 399770  | 5778364  |
| 47    | 399753  | 5778376  |
| 48    | 399731  | 5778389  |
| 49    | 399716  | 5778391  |
| 50    | 399672  | 5778394  |
| 51    | 399668  | 5778388  |
| 52    | 399671  | 5778385  |
| 53    | 399664  | 5778373  |
| 54    | 399657  | 5778368  |
| 55    | 399667  | 5778341  |
| 56    | 399643  | 5778332  |
| 57    | 399635  | 5778343  |
| 58    | 399626  | 5778344  |
| 59    | 399617  | 5778359  |
| 60    | 399603  | 5778369  |
| 61    | 399578  | 5778385  |
| 62    | 399590  | 5778401  |
| 63    | 399628  | 5778460  |
| 64    | 399581  | 5778491  |
| 65    | 399545  | 5778518  |
| 66    | 399507  | 5778549  |
| 67    | 399482  | 5778572  |
| 68    | 399661  | 5778443  |
| 69    | 399673  | 5778439  |
| 70    | 399688  | 5778429  |
| 71    | 399691  | 5778420  |
| 72    | 399687  | 5778411  |
| 73    | 399672  | 5778404  |
| 74    | 399648  | 5778407  |
| 75    | 399654  | 5778426  |

**COORDINATE  
SCHEDULE**

**DROUIN STATION  
CAR PARK UPGRADE  
PROJECT AREA**



MGA2020 ZONE 55



**LEVEL CROSSING REMOVAL PROJECT**

ORIGINAL SHEET  
SIZE: A3

SHEET  
2

LEGL./20-212