
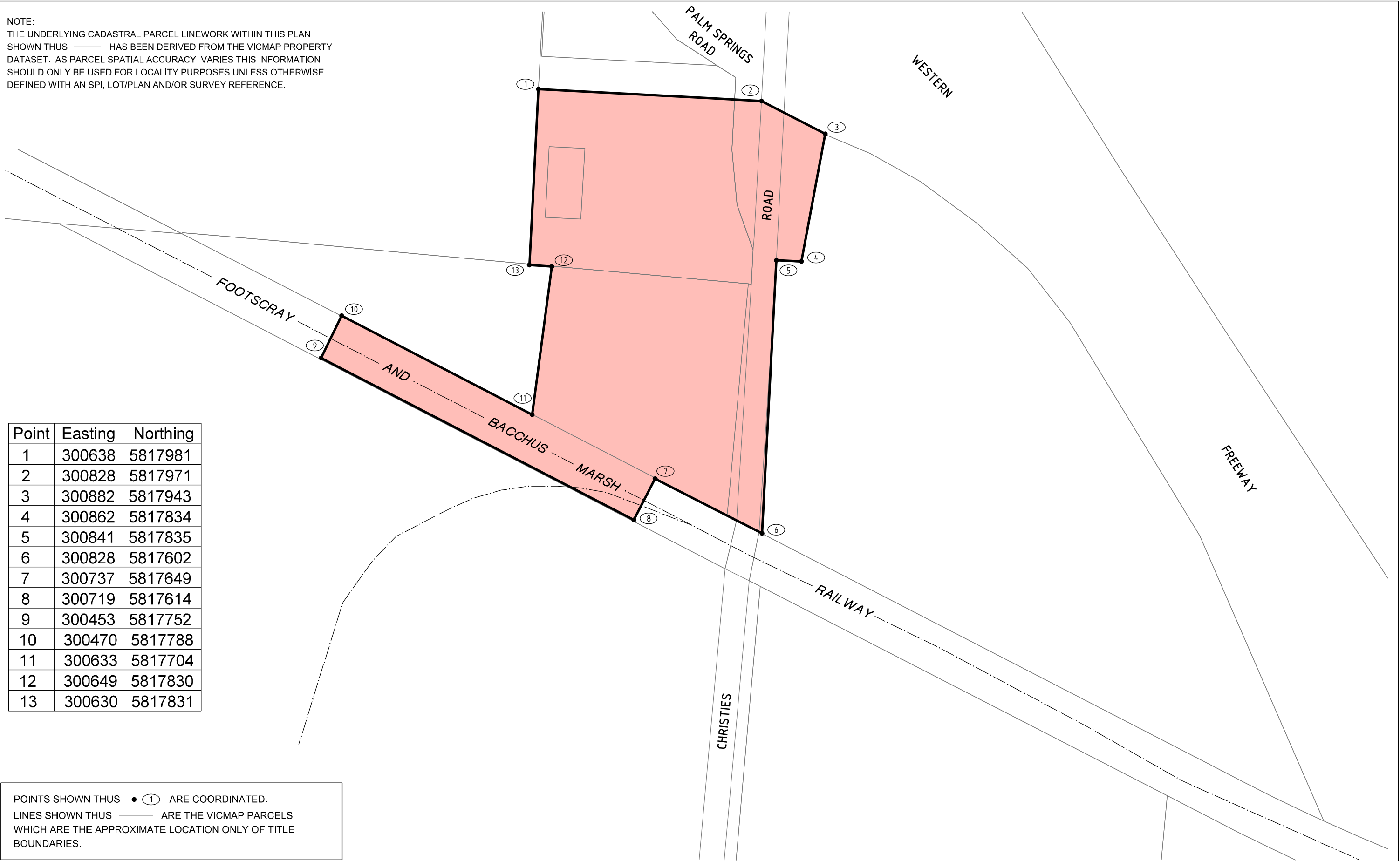




NOTE:  
 THE UNDERLYING CADASTRAL PARCEL LINEWORK WITHIN THIS PLAN SHOWN THUS  HAS BEEN DERIVED FROM THE VICMAP PROPERTY DATASET. AS PARCEL SPATIAL ACCURACY VARIES THIS INFORMATION SHOULD ONLY BE USED FOR LOCALITY PURPOSES UNLESS OTHERWISE DEFINED WITH AN SPI, LOT/PLAN AND/OR SURVEY REFERENCE.



Point	Easting	Northing
1	300638	5817981
2	300828	5817971
3	300882	5817943
4	300862	5817834
5	300841	5817835
6	300828	5817602
7	300737	5817649
8	300719	5817614
9	300453	5817752
10	300470	5817788
11	300633	5817704
12	300649	5817830
13	300630	5817831

POINTS SHOWN THUS  ARE COORDINATED.  
 LINES SHOWN THUS  ARE THE VICMAP PARCELS WHICH ARE THE APPROXIMATE LOCATION ONLY OF TITLE BOUNDARIES.

PLAN TO DESIGNATE THE PROJECT AREA PURSUANT TO SECTION 95(2) MAJOR TRANSPORT PROJECTS FACILITATION ACT 2009  
 Lodged in the Central Plan Office  
 Dated this 15th day of February 2021  
  
 CRAIG LESLIE SANDY  
 Surveyor-General

**LEGEND**

 PROJECT AREA

**CAROLINE SPRINGS STATION  
 CAR PARK UPGRADE  
 PROJECT AREA**



**LEVEL CROSSING REMOVAL PROJECT**

30 0 30 60 90 120 SCALE 1:3000  
 LENGTHS ARE IN METRES

ORIGINAL SHEET SIZE: A3 SHEET 1 of 1 LEGL./21-058

30511-us--1e-14--MGA2020 4/02/2021